

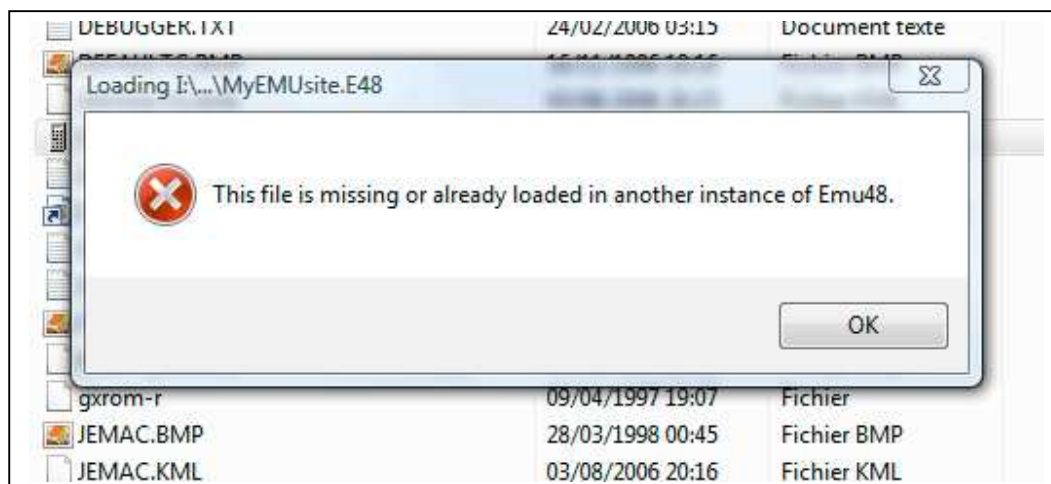
INSTALLING YOUR EMU48



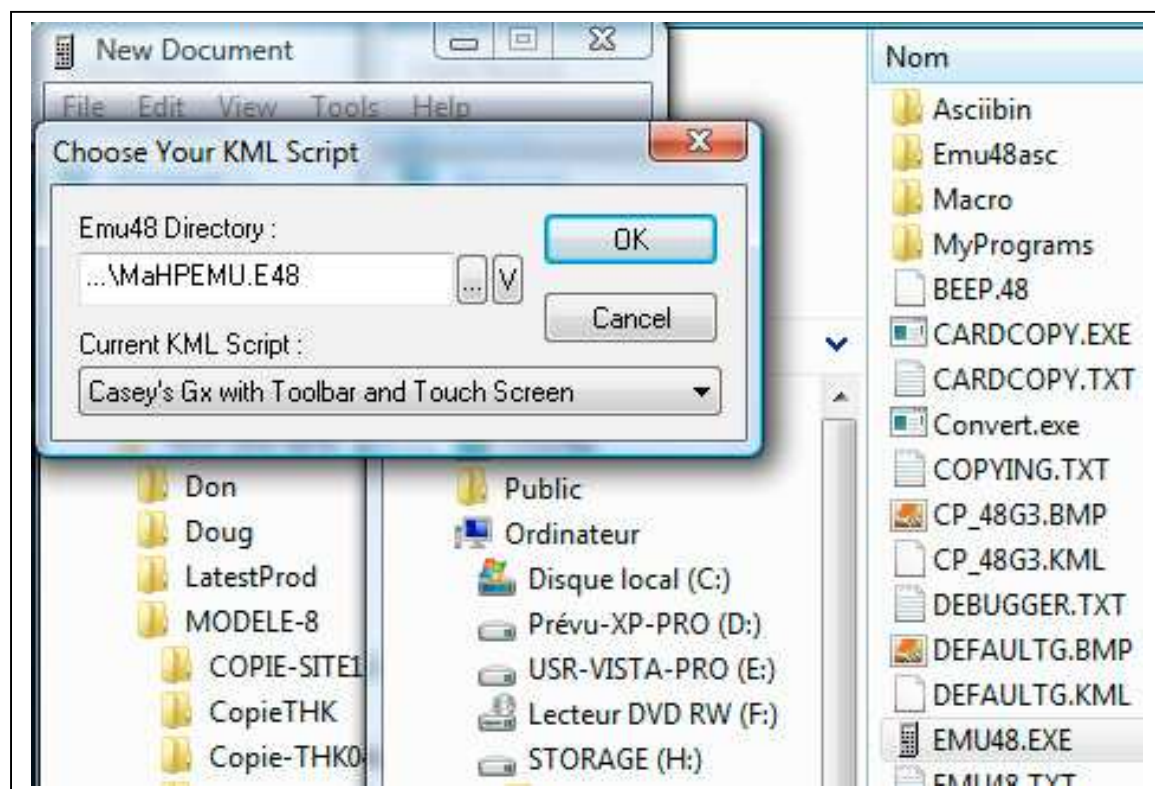
CARDCOPY.EXE	32 Ko
CARDCOPY.TXT	3 Ko
Convert.exe	32 Ko
COPYING.TXT	18 Ko
CP_48G3.BMP	213 Ko
CP_48G3.KML	9 Ko
DEBUGGER.TXT	14 Ko
DEFAULTG.BMP	74 Ko
DEFAULTG.KML	6 Ko
EMU48.EXE	248 Ko
EMU48.TXT	20 Ko
Emu48	1 Ko
EMU48_bis.TXT	18 Ko
Emu48Ini.txt	8 Ko
FLOAT_GX.BMP	148 Ko
FLOAT_GX.KML	6 Ko
gxrom-r	512 Ko
JEMAC.BMP	235 Ko

In the EMU Folder **RUN EMU48.EXE**

You should get this result :

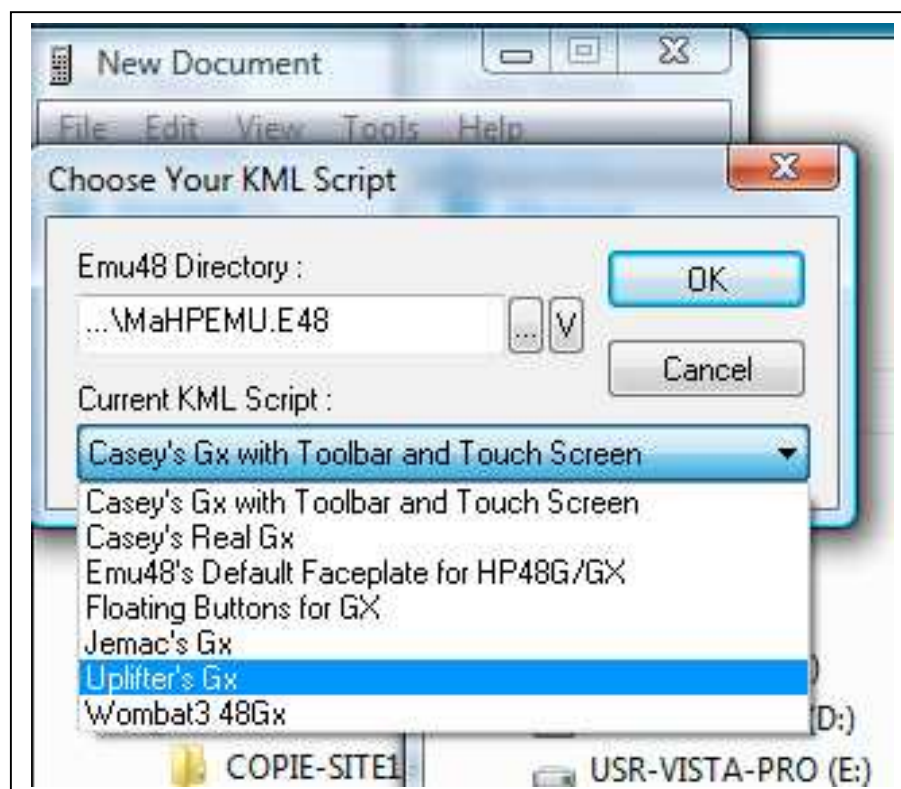


Just **push the OK button** and get that :

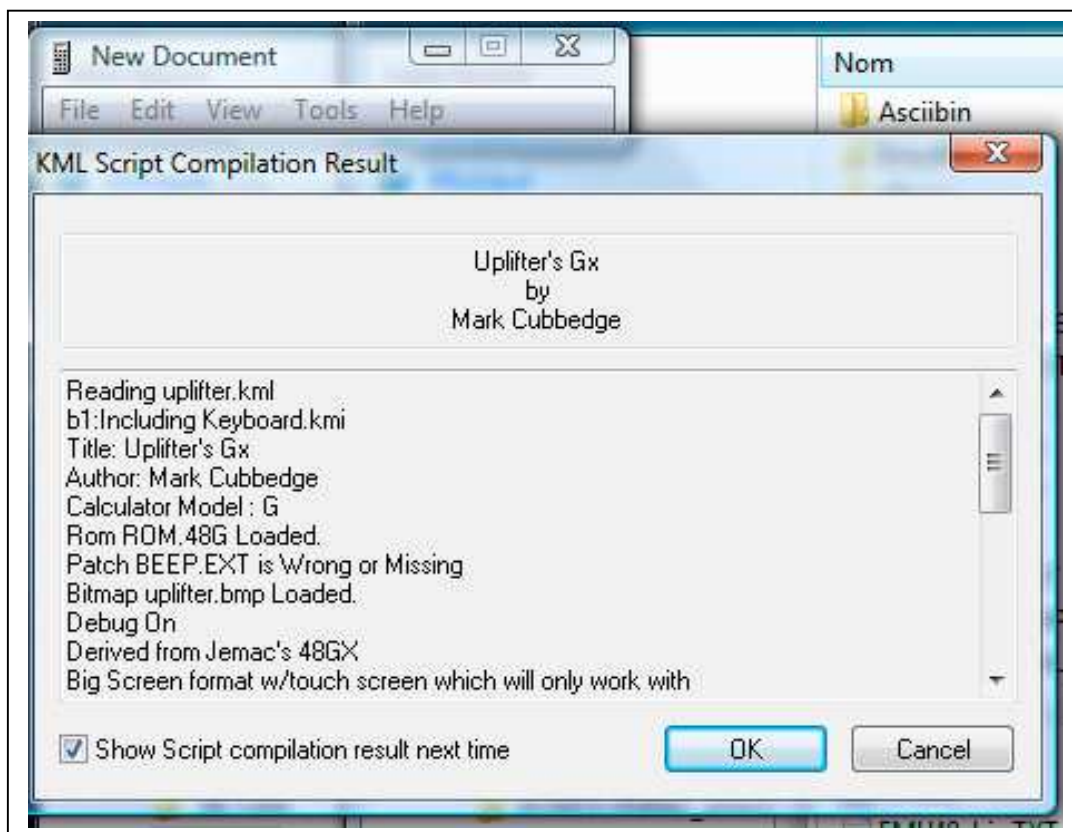


Open the lowermost rolling menu where you see Casey's GX with..... :

And choose Uplifter's GX



That will lead you there

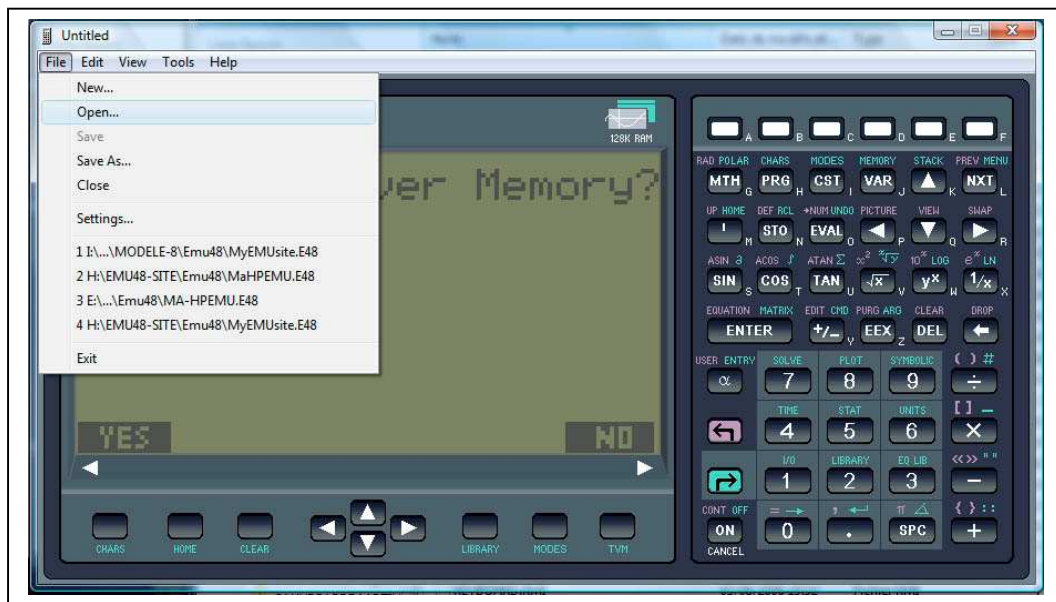


Just **say OK** in the above and you will get the calculator ;



answer **NO** to the Try To Recover Memory ? question

In the **File** of Menu open the rolling list menu and make use of « **OPEN** »

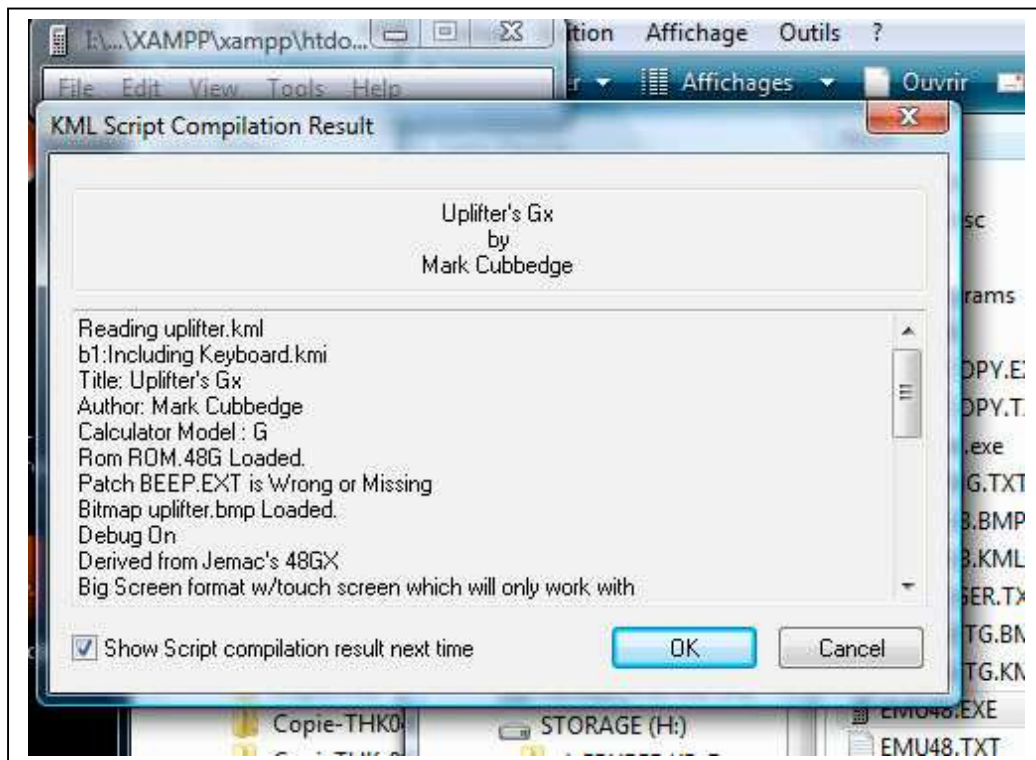


To get this screen

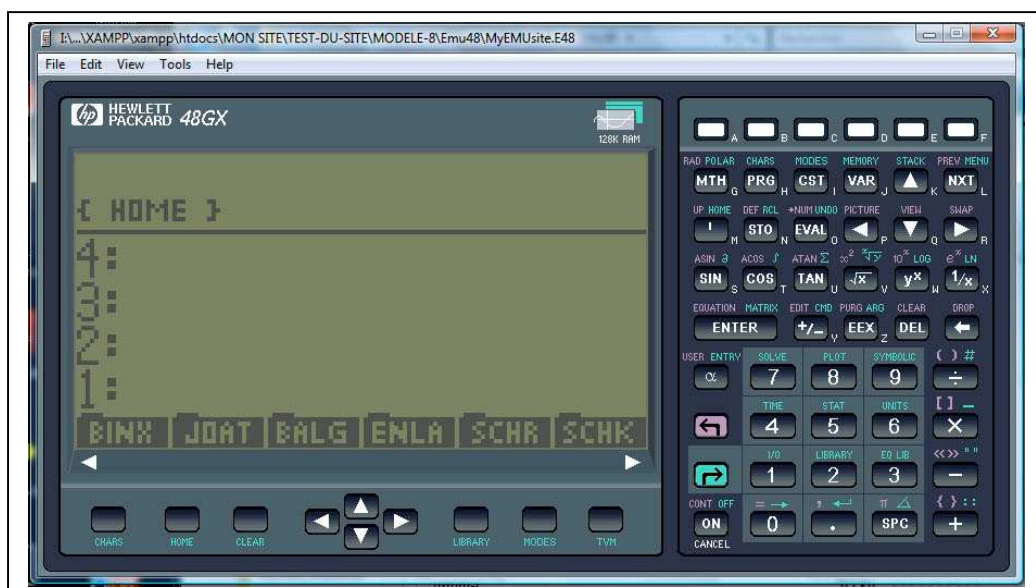


Answer NO to Do You want to save changes ?

THIS IS VERY IMPORTANT or you will destroy the file you are attempting to load !



Use the OK button.
You will get :



This is the HP48GX emulation with the programs loaded.